

# आठवी - सामान्य विज्ञान (इंग्रजी माध्यम)



**Maharashtra Academic Authority, Pune 30.**

**Educationally Progressive Maharashtra (EPM)**

**Test for Academic Progress : Summative Evaluation 2 : 2017-18**

**Standard : Eight - Subject : General Science (Written)**

Student's Name : \_\_\_\_\_ Roll No. :

School's Name : \_\_\_\_\_ Div. : \_\_\_\_\_

Center : \_\_\_\_\_ Taluka : \_\_\_\_\_ District : \_\_\_\_\_ Date :     /     / 2018

Q. No.	1	2	3	4	5	Practical/ Oral	Total	Teacher's Signature
Marks Obtained								
Marks Allotted	10	10	10	10	10	10	60	

**Write the answers of oral questions here. (Each question carries one mark.)**

O 1 \_\_\_\_\_

O 2 \_\_\_\_\_

O 3 \_\_\_\_\_

O 4 \_\_\_\_\_

O 5 \_\_\_\_\_

## Written Test

**Instructions : 2 marks sub-questions are denoted with (2 marks) and remaining sub-questions are of 1 mark each.**

**Q. 1. Answer the following sub-questions according to the given instructions.**

- For sub-question A and B, Write the correct option number in the given box.

A) In agriculture which activity is mainly done in thinning the crop.

- 1) To prevent overcrowding of plants
- 2) weeding
- 3) watering and fertilizers
- 4) spraying pesticides

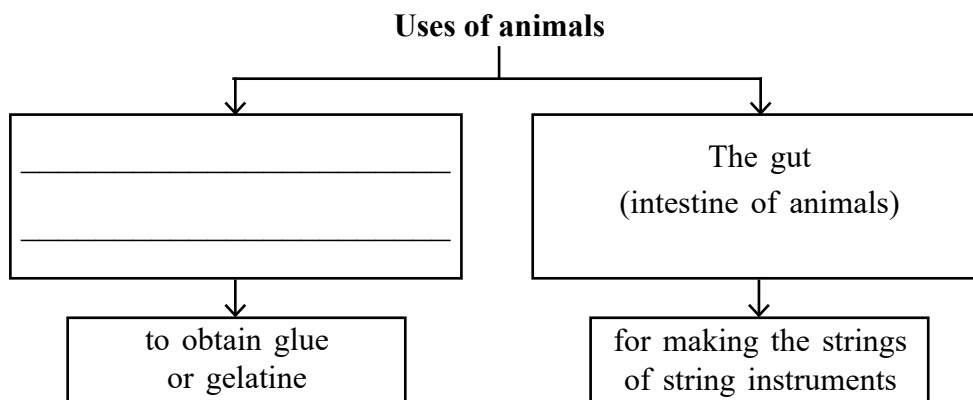
B) Milch animals are fed oil-cake of cottonseed because...

- 1) It is rich in carbohydrates and protein.
- 2) It is rich in carbohydrates and fats.
- 3) It is rich in proteins and fats.
- 4) Proportion of carbohydrates, proteins and fats is very less.

C) Write odd one out.

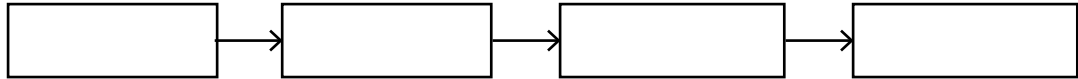
safflower (kardai), groundnut, maize, soyabean : \_\_\_\_\_

D) Complete the concept diagram.



E) Arrange the following agricultural activities in proper sequence.

sowing, ploughing, cutting, thinning



F) Correlate the first pair and complete the other.

Sericulture : ain :: The lac industry : \_\_\_\_\_

G) Complete the following table. (2 Marks)

Sr. No.	Crop	Sowing type
1)	Sugar cane	Furrows made in the soil
2)	Rice	_____
3)	_____	Poking Method

H) Write the difference between Layers and Broilers hens with the help of following points. (2 Marks)

Points	Layers	Broilers
1) Varieties	_____	Rhode Island Red
2) Uses	to lay more eggs	_____

**Q. 2. Solve the following sub-questions according to given instructions.**

- For sub-question A and B, Write the correct option number in the given box.

A) In Maharashtra, in many schools through which teams, Social forestry project is carried out ?

- |                     |               |
|---------------------|---------------|
| 1) Van Sena         | 2) Van Kranti |
| 3) Green Revolution | 4) Harit Sena |

B) In laboratory in preparation of Oxygen, Oxygen is collected in water filled gas jar inverted over the water because \_\_\_\_\_

1) Oxygen gas is slightly heavier than air.

2) Oxygen gas is lighter than air.

3) Oxygen gas dissolves in water.

4) Oxygen gas does not dissolve in water.

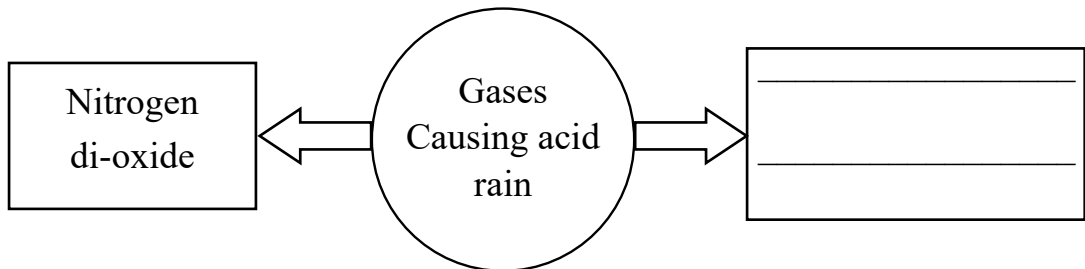
C) Correct the following statement and write it again.

'To decorate earthenware or porcelain articles made of china clay with red colour, copper oxide is used.

---

---

D) Complete the following information.



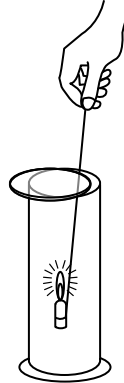
E) From the following examples, recognize and circle the plant origin constituent of the soil.

Protozoa, blue-green algae, worms, insects

F) Write any one name of inert gases in air.

---

- G) In the diagram given below, if a lighted candle is hold in a jar full of gas, it burns with a brighter flame. From the information given above, answer the following questions. (2 Marks)



- 1) Write the name of the gas filled in a jar.

\_\_\_\_\_

- 2) By the above experiment. Which property do you find of that gas in the jar ?

\_\_\_\_\_

- H) Write any two measures to avoid soil pollution. (2 Marks)

1) \_\_\_\_\_

2) \_\_\_\_\_

**Q. 3. Solve the following sub-questions according to given instructions.**

- For sub-question A and B. Write the correct option number in the given box.

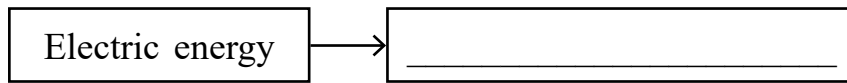
- A) From the given following statements, which statement is false about natural gas ?

- 1) After burning, natural gas does not leave any solid substance there.
- 2) Natural gas can be transferred from main source through a tap.
- 3) Natural gas does not burn rapidly.
- 4) We can control burning of Natural gas.

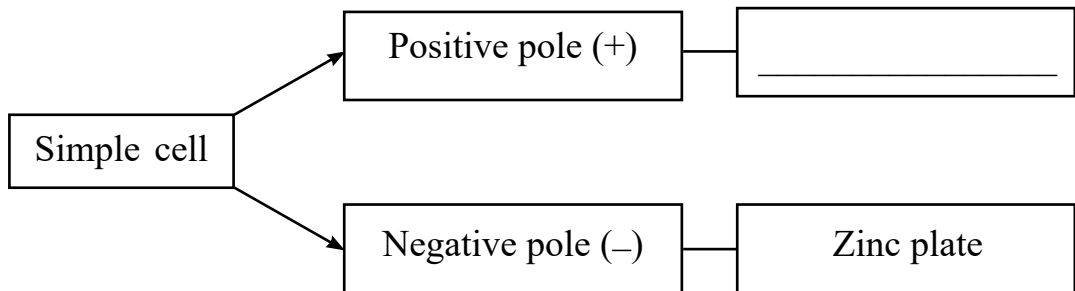
B) From the following cells, which cell can be recharged again  and again?

- 1) Simple cell
- 2) Nickel-cadmium cell
- 3) Button cell
- 4) Dry cell

C) In an electric bulb, in which form electrical energy is converted ? write it.



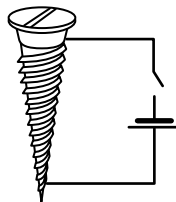
D) Complete the information of dry cell in the following concept diagram.



E) Where is atomic power plant situated in Maharashtra write it.

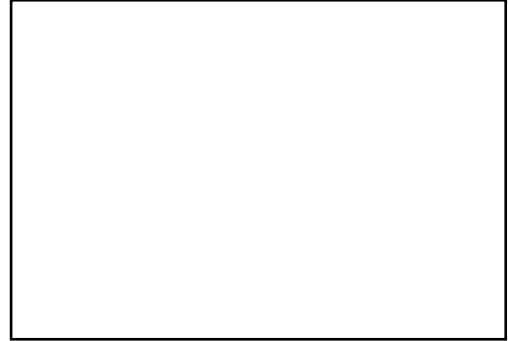
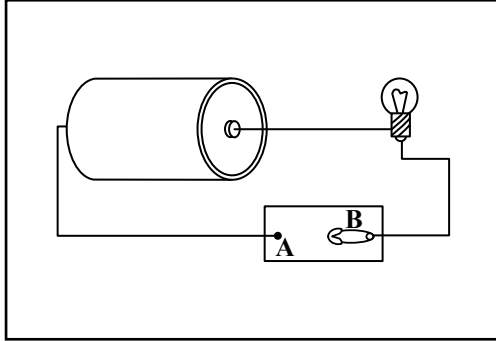
---

F) In the diagram given below. If the electric current flows through the coil around the wire of a nail, which property will the nail get ? write it.



---

- G) Draw the following electric circuit diagram again with the help of symbols of the parts drawn in it. (2 Marks)



- H) In the chart given, examples of sources of energy are classified in two types. Write the appropriate names of types of sources of energy. (2 Marks)

Type	_____	_____
Examples	1) Coal 2) Mineral Oil	1) Bio-diesel 2) Wind energy

**Q. 4. Solve the following sub-questions according to given instructions.**

- For sub-question A and B, Write the correct option number in the given box.

- A) What is the main principle behind fractional distillation from the given below.

- 1) Difference between boiling point
- 2) Difference between melting point
- 3) Difference between freezing point
- 4) All the above

- B) Bronze is alloy of which two metals?

- 1) Iron and carbon
- 2) copper and tin
- 3) copper and nickel
- 4) Iron and tin

- C) Complete the following chemical reaction.



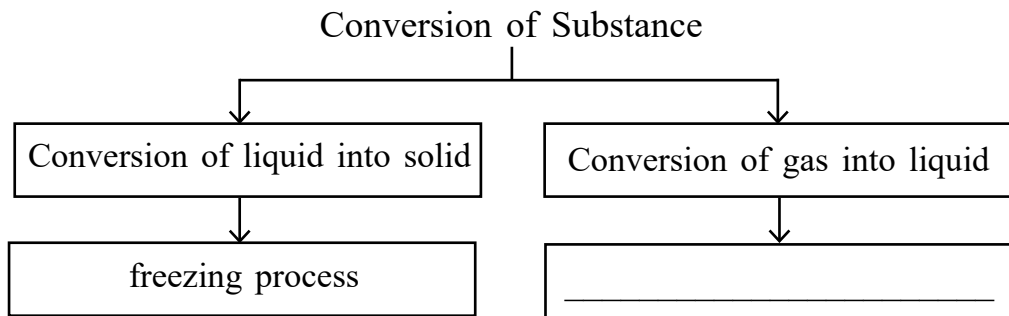
D) Write whether following statement is true or false.  
Carbon does not dissolve in any solvent.

---

E) Which amorphous form of Carbon is used for purifying water? Write it.

---

F) Complete the information of concept diagram given below.



G) Carbon dioxide gas is used as fire extinguisher. Write any two scientific reasons. (2 Marks)

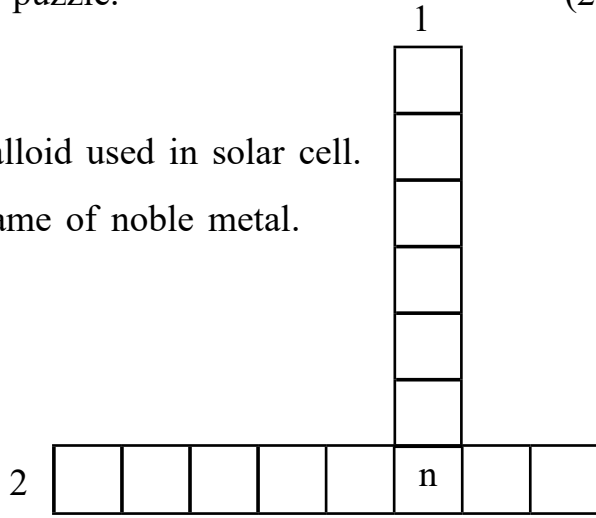
---

---

---

H) Complete the following puzzle. (2 Marks)

- 1) Vertical word - Metalloid used in solar cell.
- 2) Horizontal word - name of noble metal.





**Q. 5 Solve the following sub-questions according to given instructions.**

- For sub-question A and B. Write the correct option number in the given box.

A) In which form of arrangements are carbon atoms joined to each other in Fullerene

- 1) triangular and quadrilateral    2) quadrilateral and pentagonal  
3) hexagonal and quadrilateral    4) pentagonal and hexagonal

B) In the following statements, which statement is true about evaporation.

- 1) Converts solid into gas.  
2) It happens at certain temperature.  
3) It happens on the surface of liquid.  
4) Due to high temperature, speed of process of evaporation decreases.

C) Who am I ? write it.

One form of carbon is used as lubricant.

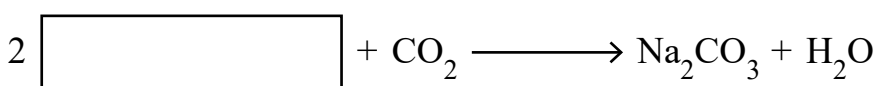
---

D) Write a sequence of separation of constituents of crude oil by fractional distillation method.

naphtha, Diesel, petrol, kerosene

1) \_\_\_\_\_ 2) \_\_\_\_\_ 3) \_\_\_\_\_ 4) \_\_\_\_\_

E) Complete the following chemical reaction.



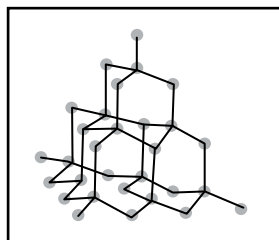
Sodium hydroxide + Carbon dioxide      Sodium carbonate + water

F) Write chemical name of compound 'baking soda'.

---

G) -

(2 Marks)



1) Which form of carbon is shown in the above structure? write it.

---

2) In the above structure, how many carbon atoms are attached to each carbon atom at specific distances around it ? write it.

---

H) Draw well labelled diagram of distillation process.

(2 Marks)

